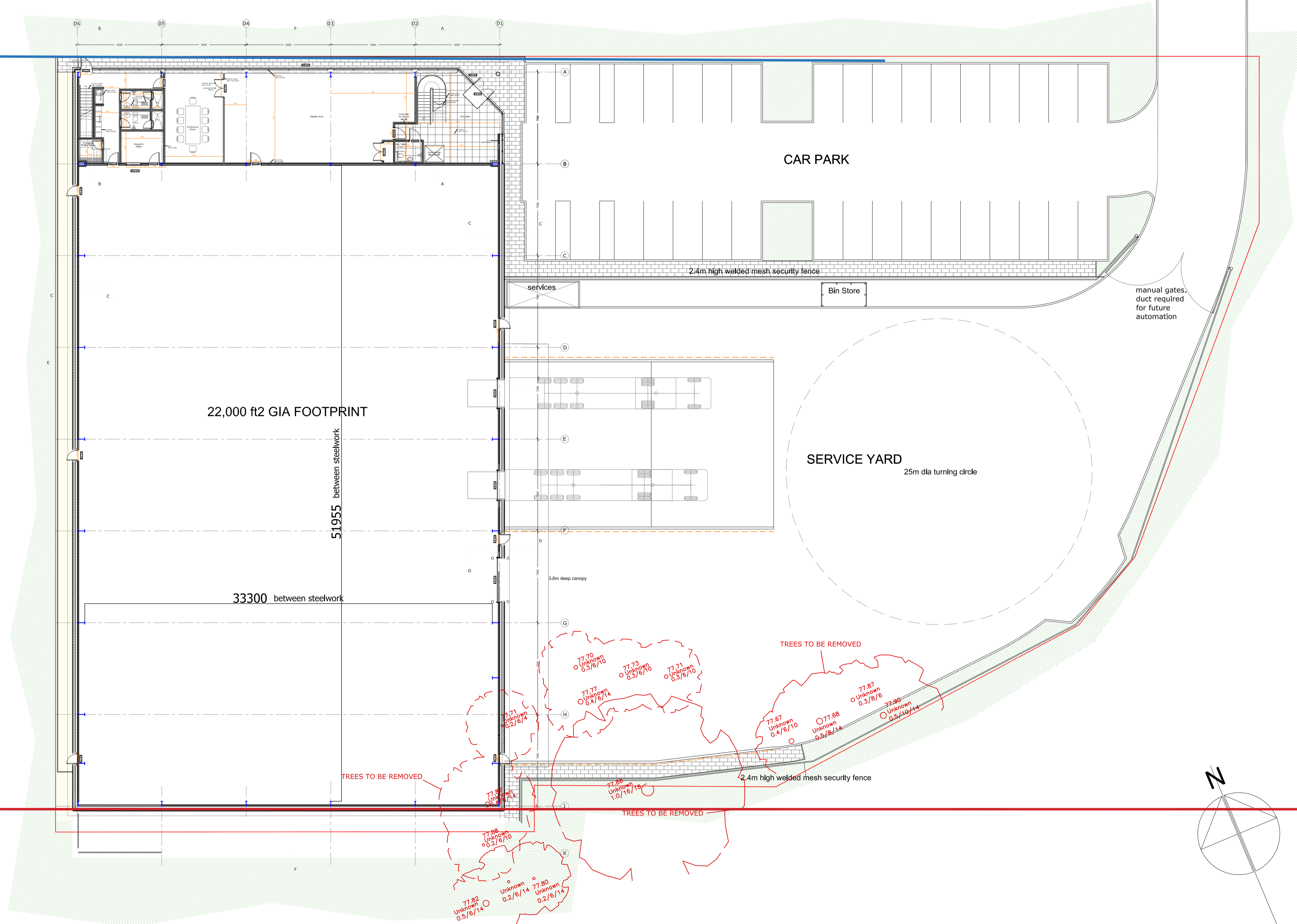


PREVIOUS LOCATION

PROPOSED LOCATION



22,000 ft2 GIA FOOTPRINT

CAR PARK

SERVICE YARD

25m dia turning circle

51955 between steelwork

33300 between steelwork

PREVIOUS LOCATION

REVISIONS:

PROJECT
Plot 4000
Westcott Venture Park

Rockspring Hanover Property Unit Trust

DRAWING

SKETCH SITE LAYOUT

SCALE	PAPER SIZE	DATE	DRAWN BY
1:200	A1	09.10.18	PR

DRAWING N°	REVISION
078.03.21.500	A

CAD REF.	078.03.21.500A Site Layout.dwg
----------	--------------------------------

McCurdy Russell Architects